



INFORMATION & CYBER SECURITY IMPLEMENTATION USING ISO 27001

Information as an asset, is important as capital infrastructure and people. Business' security needs are changing rapidly. Enterprises today need to view their organizational structures and processes holistically and must take an integrated approach to secure their information assets including IT, telecommunications & and others. ISO 27001 is precisely tailored to meet all these information security and cyber security needs of the organization.


QUICK INFORMATION SECURITY FACTS




More malware is being launched than ever before:
230,000 new malware samples/day




There is a hacker attack every
39 seconds



The average cost of a data breach in 2020 will
exceed \$150 million



Since 2013 there are 3,809,448 records stolen from
breaches every day, 158,727 per hour, 2,645 per minute
and 44 every second of every day



By 2020 there will be roughly 200 billion
connected devices

<https://www.cybintsolutions.com/cyber-security-facts-stats/>

WHY IMPLEMENT INFORMATION SECURITY MANAGEMENT SYSTEM (ISMS)?

Organizations implementing ISMS see results as follows:

- Secures all types of critical information assets (data & information, software, physical & hardware, services, people & intangibles) through risk-based approach
- Consistency in performance through information security policies and procedures
- Increases resilience to any potential cyber-attacks
- Organization wide protection of information assets and not IT only
- Proactive monitoring and responding to evolving security threats
- Better incident planning & response
- Continual improvement

WHAT ARE THE RELEVANT STANDARDS?

ISO/IEC 27001 is one of the most common & widely used standard for establishing, implementing, monitoring and maintaining an information security management system (ISMS) worldwide. The standard gives a holistic view through its stated requirements that how any organization (IT or non-IT) can improve its information security posture by implementing the recommended controls.

ISO/IEC 27002 gives guidelines for organizational information security standards and information security management practices including the selection, implementation and management of controls taking into consideration the organization's information security risk environment(s).

ISO/IEC 27032 provides guidance for improving the state of Cybersecurity, drawing out the unique aspects of that activity and its dependencies on other security domains, in particular information security, network security, internet security, and critical information infrastructure protection (CIIP). It covers the baseline security practices for stakeholders in the Cyberspace.

BUSINESS BEAM HELPS IN EFFECTIVE IMPLEMENTATION OF ISMS

We help you to setup Information Security Management System (ISMS) based on ISO 27001, ISO 27002 and ISO 27032 standards for information and cybersecurity. Our highly customized and tailored approach helps organizations in quickly and effectively securing themselves against threats and vulnerabilities.

Salient features of our service are as follows:

Executive Advisory: Our experienced leaders are expert in organizational change management. They discuss and understand your most important and complex service management issues and provide strategic advice for success.

Strategic Alignment & Security Governance: We ensure Executive Management involvement and commitment through strategic level information security policies, planning, goals setting, definition of roles and responsibilities, and supporting action plans.

Security Risk Assessment & Planning: In coordination with information assets owners, we conduct thorough risk assessment. We also develop comprehensive risk treatment plan to help identifying and implementing effective information security controls.

Process Development: Successful process improvement efforts require a cohesive process architecture. We develop tailored policies, procedures, templates and plans based on flexible architecture. We also help you identifying information assets and their classification, and establishing information security roles and responsibilities.

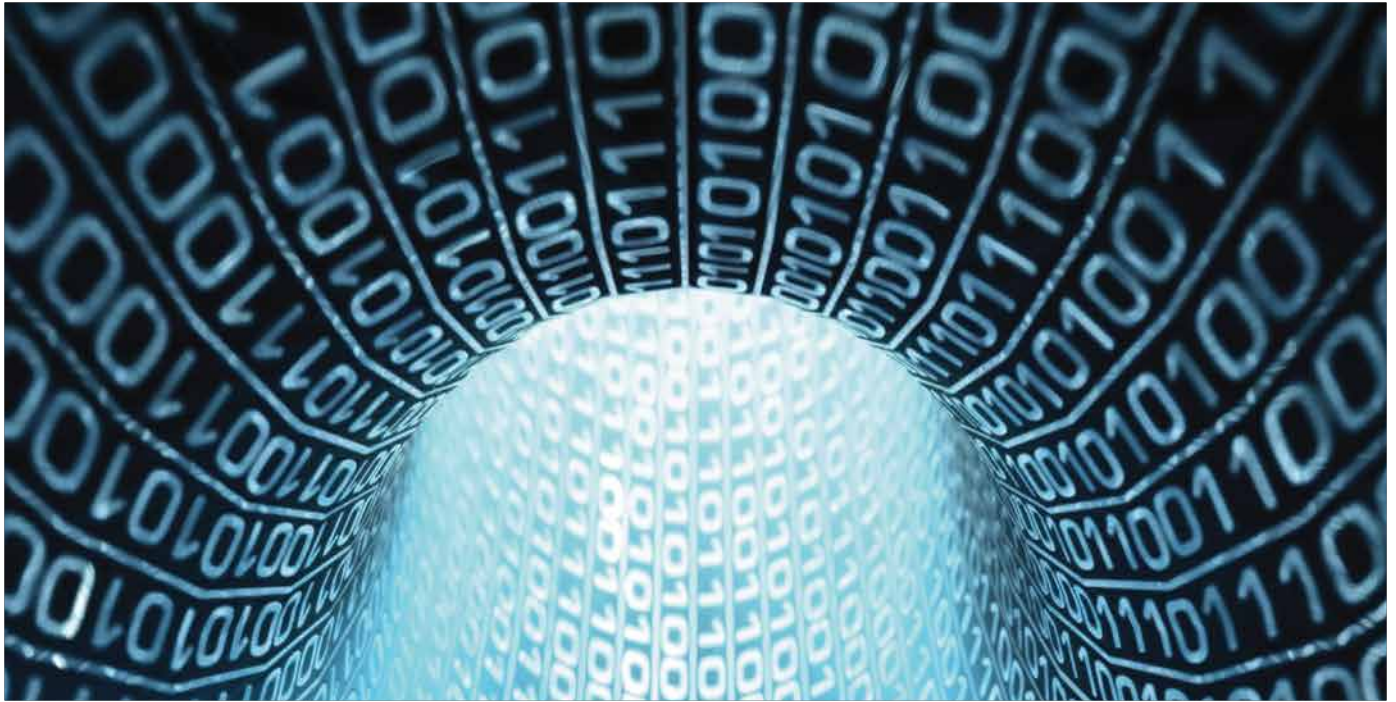
Workshops: We plan multiple informal awareness workshops for practitioners on security and control implementation. Specialized courses like ISO 27001 Lead Implementer, CISM Boot Camp, CISSP Boot Camp, etc. deliver additional value.

Rollout Support: Information security management system is not effective unless it is not understood and followed by the staff. We provide training, coaching and hand holding support to ensure that the developed information security management system is effectively implemented.

Performance Management: Performance measurement is a key for any management system to achieve its business outcomes. We help in designing a performance management system based on KPIs, KRIs, metrics and dashboards for corrective and preventive actions. We enable optimal results and informed decision making.

Expert support during Certification audits: If your organization opts for formal ISO 27001 certification, it will be conducted by a third party and your teams may require expert support during this phase. We provide extensive onsite support during the certification audit to provide your team confidence and enable them for successful outcomes.

Sustenance Support: Implementing a standard is only beginning of the journey, sustaining the same over time is even a bigger challenge. After successful implementation, we provide sustenance support ensuring continual improvements and long-lasting culture adoption.



ABOUT BUSINESS BEAM

Business Beam is a global consulting and training firm that helps companies solve problems in governance, operations, quality, services, projects, information security, business continuity, human resources, risk and internal audit.

Established in 2004 with a vision to drive organizations towards corporate excellence, Business Beam has served hundreds of organizations of various sizes, different domains and geographical regions. Business Beam partners with clients to convert them into high-performance businesses and governments. We feel honored to help them grow!

Business Beam has served hundreds of organizations of various sizes, different domains and geographical regions including USA, Saudi Arabia, UAE, Oman, Bangladesh, Hong Kong and Pakistan.

Contact us at contact@businessbeam.com